



World of Wonders non-profit report 2022 A Year of Change

Results That Matter

Our individualized approach to early education allows us to work closely with families while providing a safe, engaging, early learning environment.

140

Children currently enrolled

102

WOW Current Families

26

Staff members

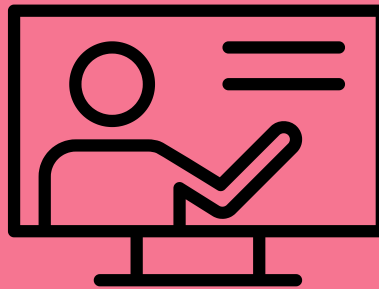
8

Employees enrolled in our free continuing education program

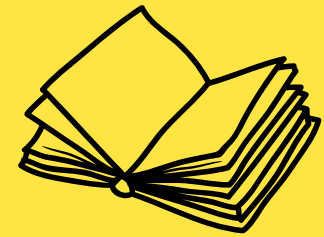
2022 Highlights



Playgrounds



Additional training hours for all staff



New Literacy curriculum



Expanding learning through new materials

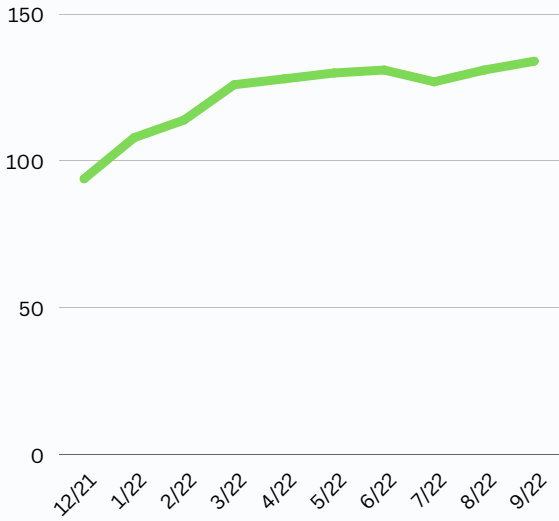


New Bus



Increased staff supports through additional staffing

2022-By the Numbers

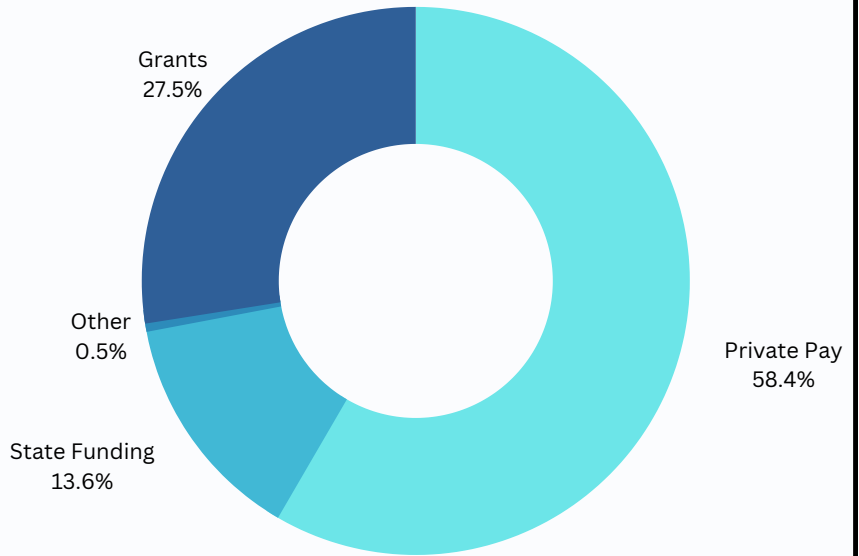


Enrollment

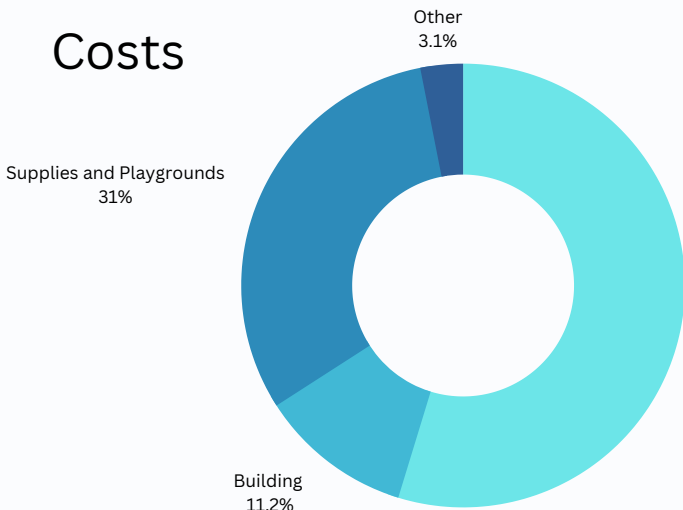
Our new school allowed us to increase our capacity by over 50 students. We currently have a waiting list for most age groups.

Income

Our regular income comes mostly from private pay families and state subsidies. We were also awarded several grants this year to help pay for new materials, the playgrounds, and increasing costs of supplies.



Costs



Cost of goods have increased throughout the year. Due to the building expansion, a large part of our spending was on increasing materials to fill new classrooms. Employee costs have also been on the rise as we hire more educated and experienced staff.

2023 Securing the Future

Program Goals



Increase family engagement events through parent workshops, volunteer opportunities, and parent education.



Achieve additional stars through Ohio's Step Up To Quality program.



Increase teacher education by enrolling more teachers in the Child Development Associates program.



Adding additional engaging learning experiences that are planned around each child's developmental goals.

Financial Goals

Keeping in mind rising costs for families, we have worked hard this year to meet the growing needs of the program, while keeping in mind the needs of our families.

The tuition raise this year will...

- Meet increasing costs of food, milk and basic supplies
- Provide a reasonable increase in wages for employees
- Save for the future purchase of the building

2023 Weekly Tuition Rates	
Infants	\$262
Toddlers	\$247
Early Preschool	\$242
Pre-Kindergarten	\$231
Pre-Kindergarten Dual Enrollment (HLC)	\$140
School Aged Before and After School	\$132
School Aged Before OR After School	\$105
School Aged Summer Camp	\$215